

# ***Siamese***

***A natural athlete***



**First tailor-made food  
for the Siamese cat**

---

***Royal Canin scientific research:  
innovation in Health Nutrition***

  
**ROYAL CANIN**

# Pure breed cats, the vanguard of Feline Nutrition

**T**here are many more breeds of cat than one might realize – as many as 66 different breeds, depending on which criteria from which international organization you choose to apply. And yet there is an injustice here, for pure breed cats represent little more than 6% of the total feline population, whereas pure breed dogs account for over 60% of the canine population.

There are many first-class arguments in favor of pure breed cats; a noble deportment, an enigmatic gaze and a beautiful coat to name but a few. The beauty of the Siamese is one of the great charms of this pure breed cat, as is another, less conspicuous attribute: its personality. The Siamese is one of the liveliest, most energetic cats there is. An incessant chatterbox, with an extroverted character and an especially playful temperament, the Siamese is an ideal indoor companion.

Above all, the Siamese cat is a born athlete with a long, clean-limbed body and very well defined muscle mass. Our nutritional plan provides the Siamese with the energy it needs without the weight-gain, to guarantee a slim figure and an athletic body.

We spent more than 18 months perfecting Siamese 38. As a result, we have a much better understanding of what makes a Siamese tick. We took our time because its feeding routine, coat and digestive sensitivity are all complex riddles that nutrition has to solve.

Together with Persian 30 in 1999 and Maine Coon 31, Siamese 38 is another milestone in our philosophy and another step towards Health Nutrition and made-to-measure nutrition.

Yet none of this would have been possible without the invaluable expertise of the breeders who assisted our Research and Development department throughout our testing process, observing, measuring and evaluating the performance of this new approach to nutrition.

And we could not have achieved what we have without the unfailing co-operation of the scientific community and veterinarians and, of course, the commitment and professionalism of our nutritionists.

Thanks are due to everyone who made “Knowledge and Respect” – the signature of our brand – not a publicity slogan, but very tangible reality.

Mr. Jean-Christophe Flatin  
Chief Executive Officer  
Royal Canin Group

## At a glance

Pure breed cats, the vanguard of Feline Nutrition	2
Looking after a slender yet muscular body	4
A tendency to gulp food, inducing regurgitations and oro-dental infections	6
Digestive sensitivity for better prevention	10
Strengthening natural defenses	12
Glossary	14
The History of the Siamese	15
Characteristics of the breed	16
Bibliography	17
<b>Siamese 38™</b>	<b>18</b>
Royal Canin, setting the pace in Feline Health Nutrition	19

## **1. FITNESS MAINTENANCE**

### **Looking after a slender yet muscular body**

Guaranteeing preservation of muscle mass in the Siamese through:

- Protein-rich, low-energy food
- A unique synergy of conjugated linoleic acid and L-carnitine

## **2. ORAL HYGIENE**

### **A tendency to eat too quickly, inducing regurgitations and oro-dental affections**

The twin benefits of a made-to-measure kibble:

- Slows down ingestion of food and stimulates chewing
- Prevents tartar deposits by mechanical brushing

## **3. BIODIGEST SECURITY**

### **Digestive sensitivity for better prevention**

Upgrades digestive security and transit due to:

- An optimal balance of soluble and insoluble fibers
  - Incorporation of FOS and MOS
- An increased source of Omega 3 fatty acids

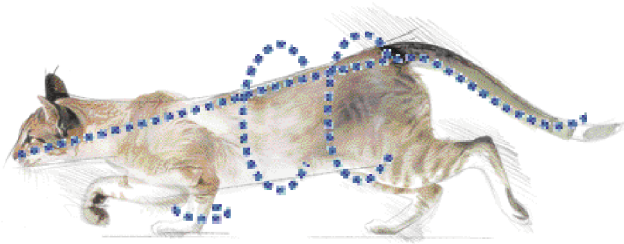
## **4. IMMUNITY ACTION**

### **Strengthening natural defenses**

Better protection for the body by the synergistic association of:

- Vitamins E and C
- Taurine
- Lutein

# 1 Looking after a slender...



Head, ears and neck, body, legs and tail, everything about the Siamese is elongated.

This distinctive build in the extended pure breed cat family is slender, the primary distinguishing feature of the Siamese or the Oriental Shorthair.

Vital statistics (cm)	Maine Coon	Persian	Siamese
Total length	95.7 ± 5.19	67.7 ± 6.22	74.4 ± 5.26
Tail length	35.7 ± 2.06	25.0 ± 2.37	26.9 ± 2.85
Legs	7.4 ± 0.48	7.3 ± 0.61	6.1 ± 0.45
Chest	32.1 ± 2.71	32.3 ± 3.14	26.4 ± 1.27
Height	31.2 ± 3.70	34.7 ± 3.44	25.6 ± 3.72

## ...yet muscular body

For breeders of the Siamese, the quest for the most beautiful cat starts by developing a firm, muscular body, without visible accumulation of fat.

That means that a male Siamese rarely weighs more than 11 lbs. (5 kg) and a female rarely more than 9 lbs. (8 kg).

The pursuit of a slender, tubular build for the Siamese is in perfect harmony with the cat's exceptionally dynamic personality.

One of the main objectives of Siamese cat breeders is controlling and minimizing body fat.



# ➔ **FITNESS MAINTENANCE**

## **Guaranteeing preservation of muscle mass in the Siamese through:**

- **Protein-rich, low-energy food**

Its high-protein content (38%) and moderate energy supply enable Siamese 38 to ensure a muscular figure without accumulation of fat.

A high-protein content provides a double advantage

- Gluconeogenesis of the proteins modulate peak glucose levels and accelerate the sensation of a full stomach to moderate intake.
- Proteins promote lean body mass rather than fat. The net energy intake from proteins is 30% and 60% lower than the energy generated through the digestion of carbohydrates and lipids respectively. So, protein actually limits the formation of adipose tissue (fat reserves).

- **A unique synergy of conjugated linoleic acid and L-carnitine**

Conjugated linoleic acid (CLA) – *less fat, more muscle*.

CLA acts on the metabolism of lipids by limiting the engorgement of fatty acids in the adipocytes (fat cells). It also contributes to the synthesis of prostaglandins (growth hormones) that optimize muscle fiber growth.

CLA also has an antioxidant effect that protects genetic material and restricts tumor development by neutralizing free radicals.

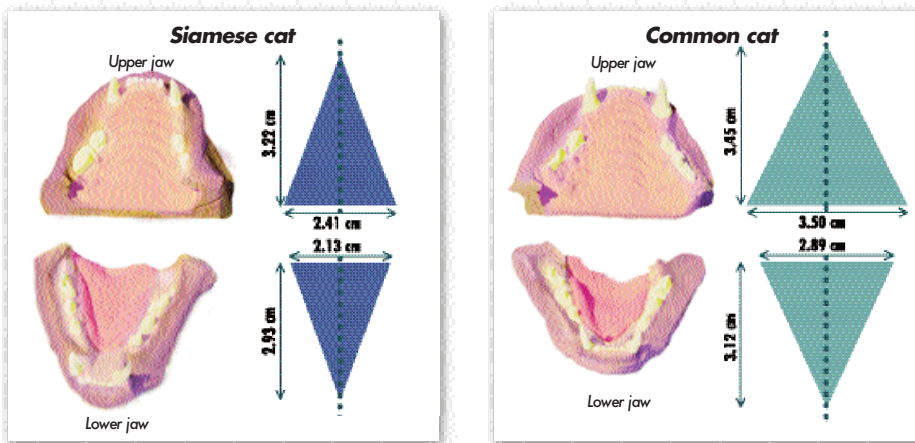
L-carnitine: *more energy, less fat*

L-carnitine facilitates the utilization of fats.

The presence of L-carnitine promotes the transport of fatty acid reserves through the cellular membranes to the mitochondria – the cellular lungs – where they undergo oxidation before being converted into the energy the body needs.

# 2 A tendency to gulp food, inducing regurgitations and oro-dental infections

## Facial morphology



The facial morphology of the Siamese is characterized by its wedge-shaped skull. Measurements of teeth impressions reveal a lower jaw (mandible) and an upper jaw (maxillary) that is finer and narrower, compared to the common cat.

Source: Royal Canin Research Center, 2002

## Food prehension

The prehension method favored by the cat depends on the size and shape of the kibble.

Sequential analysis of 4,800 tests among Siamese and Oriental Shorthair cats shows that the labial method of prehension, that is using the incisors, is predominant (85%). Here, the cat opens its jaws very widely in order to gulp his food.

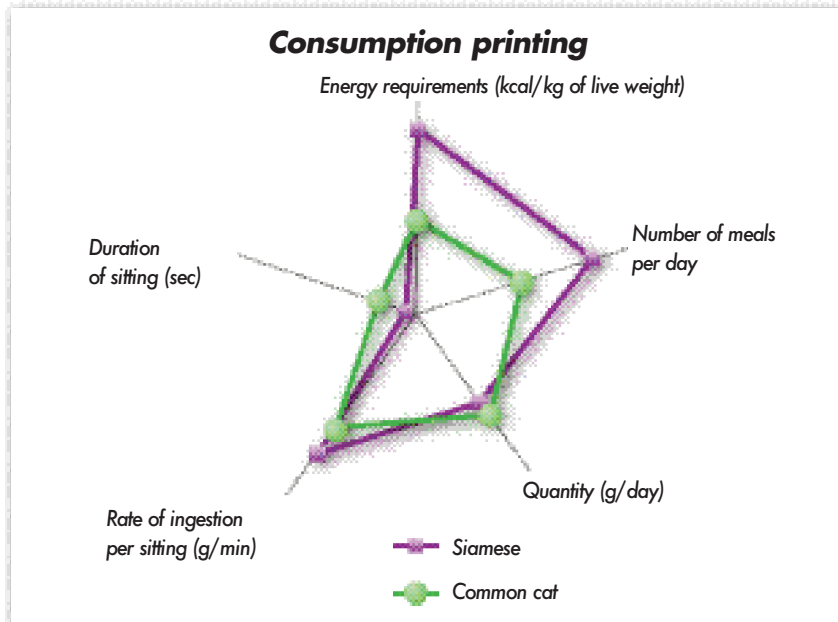


Source: Royal Canin Research Center, 2002

## Consumption profile

The Siamese may eat up to 22 meals (8-22) a day. The average amount eaten is 5 g/sitting (3.3-7.1) and the rate of ingestion is relatively high (3.9 g/min), 10% higher than the average observed among common cats.

(Source: Royal Canin Research Center, 2002)



Source: Royal Canin Research Center, 2002

The frequent regurgitations observed during infancy (Desprez G., 2001) are due to this excessive rate of ingestion. The eating behavior induces little chewing of food, which encourages the development of dental plaque, the emergence of gingivitis and the build-up of tartar.

Oral pathologies are the number one reason why Siamese cat owners consult a veterinarian.

(Purdue Veterinary Medical Database)

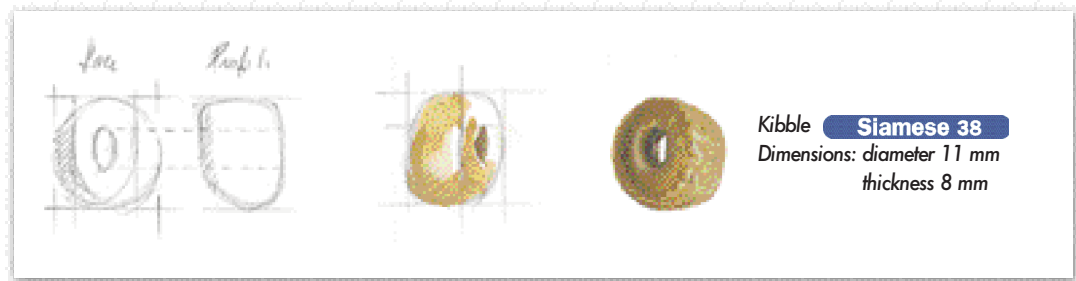
## ➔ **ORAL HYGIENE**

### **The twin benefits of a “made-to-measure” kibble:**

#### **1. Slows down the rate of ingestion**

The development of this kibble necessitated an array of tests. Ten kibble prototypes were tested at the Royal Canin Research Center before being substantiated with breeders. The behavioral and physiological effects on the animals, their way of grasping the food and the effects on digestion were observed, measured and analyzed minutely.

The innovative ‘tubular’ kibble selected is easier to grip (labial method) with the incisors and encourages the Siamese to chew, as the surface area is larger. That results in a very significant deceleration in the rate of ingestion, which plays a role in preventing regurgitation.

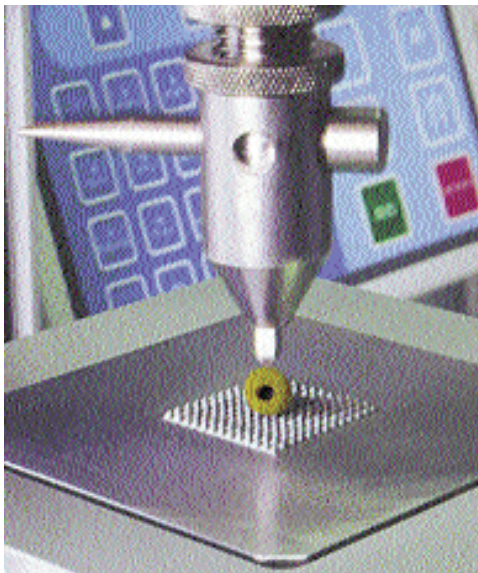


## 2. Prevents tartar deposits by mechanical brushing

The accumulation of food fragments results in a bacterial deposit, popularly known as dental plaque, which gradually becomes tartar. This accumulation may cause gingivitis, which can lead to tooth loss.

The kibble's shape also makes chewing easier. This chewing imitates mechanical brushing of the teeth, helping to slow down the mineralization of dental plaque.

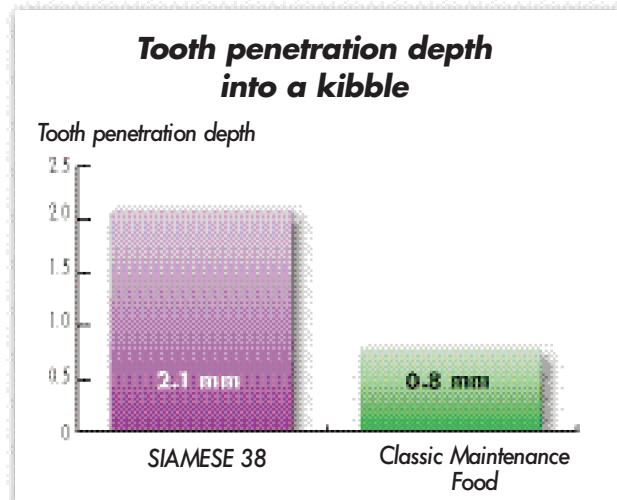
The texture of Siamese 38 increases the tooth penetration depth into the kibble (2.1 mm), encourages the Siamese to chew more and improves the efficiency of mechanical brushing.



*Texturometer: modeling of a Siamese cat's tooth*

Source: Royal Canin Research Center, 2002

### *A leap forward*



Source: Royal Canin Research Center, 2002

# 3 **Digestive sensitivity for better prevention**

## **Characteristics**

Oral infections and gastric complaints (vomiting) are the most common diagnoses among 6,553 Siamese cats referred to veterinarians. *(Purdue Veterinary Medical Database)*

A survey of Siamese breeders conducted in 2001 by the Royal Canin Research and Development Center confirms these epidemiological findings.



# ➔ BIODIGEST SYSTEM

## Upgrades digestive security and transit due to:

- **An optimal balance of soluble and insoluble fibers**

Beet pulp, partially broken down in the small intestine, helps regulate the motility of the digestive tract and, as a source of soluble fibers, provide energy to the bacteria in the large intestine.

- **Incorporation of FOS and MOS**

The incorporation of Fructo-Oligosaccharides (FOS) stimulates the development of beneficial bacterial flora (bifidus and lactobacillae) and inhibits the proliferation of pathogens. FOS also improve the absorption of certain nutrients. Mannan-Oligosaccharides (MOS) are natural yeast extracts that have a twofold effect on digestive health:

- **Barrier effect.** They help limit potential pathogens by inhibiting the sites of attachment on intestinal mucus. Pathogenic bacteria are therefore unable to attach themselves to the receptors of the cells that form the lining of the intestine and are carried away by intestinal transit.
- **Booster effect.** They stimulate local defenses by increasing the antibody count and the production of white blood cells responsible for general defense.

- **An increased source of Omega 3 fatty acids**

The presence of fish oil rich in EPA and DHA, which are molecules involved in the synthesis of anti-inflammatory substances, limit inflammatory reactions that degrade the integrity of intestinal mucus.

### Action of the nutrients in the intestine

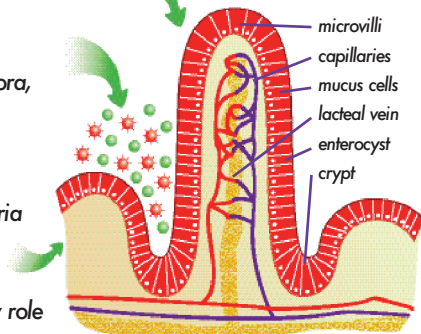
- **Beet pulp, psyllium seed:**

*facilitate transit and the formation of firm stools*

- **FOS:** stimulate flora, nourish mucus

- **MOS:** inhibit pathogenic bacteria

- **EPA and DHA:** anti-inflammatory role



# 4 **Strengthening natural defenses**

Better protection for the body by synergistic association:

- **Vitamins E and C**
- **Taurine**
- **Lutein**

The immune system cells play a key role in the protection of the body. They are particularly sensitive to the threat of oxidization posed by free radicals due to the great fragility of the membranes, which may compromise vital exchanges between cells.

## **IMMUNITY ACTION**

### **Nutritional objectives of synergistic complex**

- **Protecting immune system cells.**
- **Increasing the activity of immune cells by stimulating the production of antibodies.**
- **Ensuring the reproduction of immune cells.**
- Increased source of **vitamin E** to slow down cellular aging. Vitamin E's ability to block free radicals makes it a key component in the protection of cell membranes and the strengthening of immune system defenses.
- Increased source of **vitamin C** to aid the regeneration of vitamin E and so enable it to continue to fight other free radicals and combat cellular stress.
- An essential amino acid for cats, **taurine** is one of the main constituents of immune cells and more particularly of antibody producing cells (lymphocytes).
- An extract of vegetable origin, **lutein** is 20 times more concentrated in the petals of African marigold (*Tagetes erecta*).

# The work of lutein

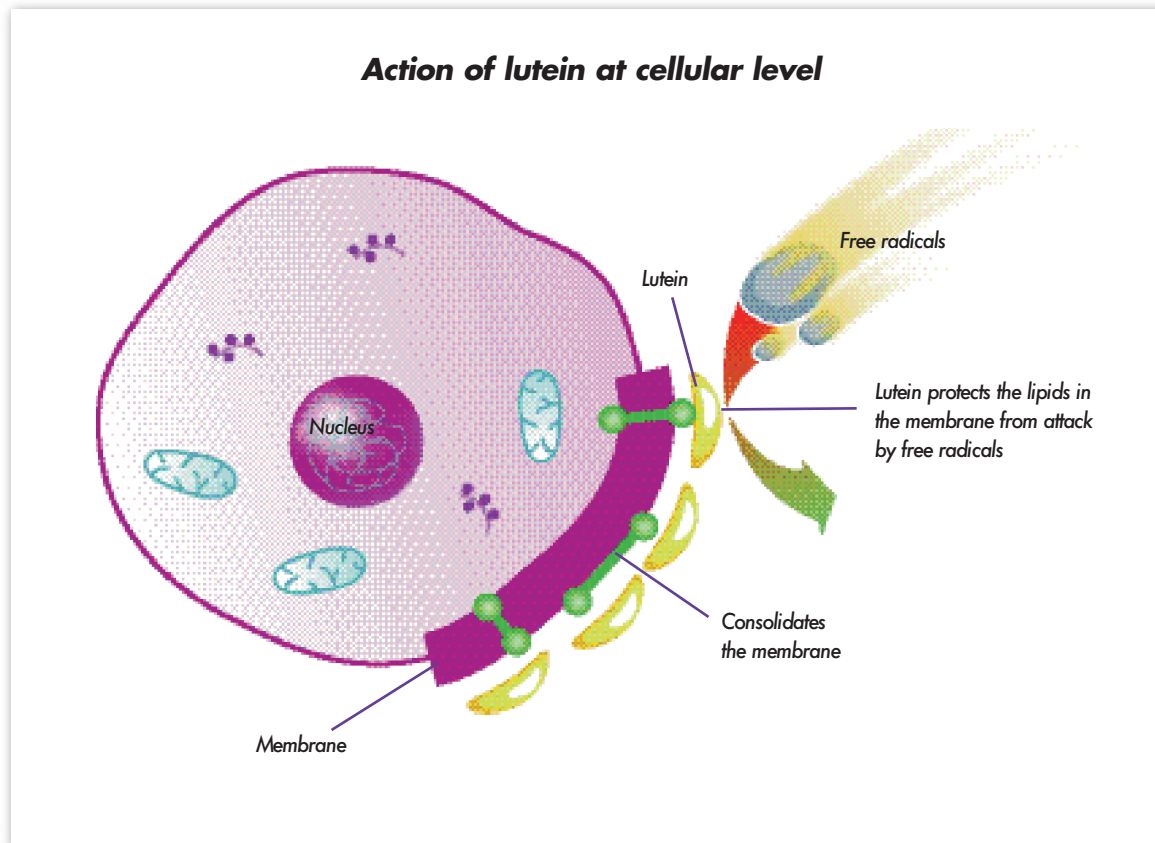
Conveyed in the blood by lipoproteins, lutein has two essential tasks:

- **Protection from free radicals:** by incorporating itself into the cell membrane, lutein protects the lipids in the membrane from attack by free radicals, consolidates the membrane and combats peroxidation of the lipids.
- **Consolidation of the cell membranes and modulation of the immune system response** by increasing the production of antibodies (Reinhart, G. A, 2000).



All rights reserved

*Tagetes erecta*



# Glossary

- Antioxidant:** substance protecting the body's cells from attack by free radicals (slows down aging).
- Beneficial flora:** good bacteria in the intestine involved in the digestion of food and maintenance of intestinal mucus.
- Borage:** flower from which oil is extracted that yields omega 6 fatty acids; helps maintain the skin and the coat.
- Carnitine:** amino acid (L-carnitine) contributes to the mobilization of fatty tissue reserves and supports muscle growth.
- Chelated trace elements:** trace minerals (copper, magnesium, iron etc) protected by a larger molecule to enable assimilation through the intestinal mucus
- Conjugated linoleic acid:** ensures a muscular build by limiting lipogenesis and so the formation of fatty tissue.
- EPA and DHA:** omega 3 fatty acids present in fish oils, that have a profound anti-inflammatory role.
- FOS, Fructo-Oligosaccharides:** food fibers that help the development of a beneficial intestinal flora.
- Free radical:** molecule causing many types of cellular degeneration (aging), especially by oxidation.
- Lutein:** in association with vitamins C and E, lutein neutralizes free radicals, especially by protecting immune cell membranes.
- MOS, Mannan-oligosaccharides:** food fibers that have a beneficial effect on intestinal flora and stimulate the intestine's immune defenses.
- Nutrient:** food substance that can be directly and completely assimilated by the body.
- Omega 6 fatty acids:** fatty acids that impact the quality of the coat and the health of the skin. Rich in vegetable oils.
- Omega 3 fatty acids:** an anti-inflammatory role ensures the maintenance of healthy skin and a shiny coat, particularly EPA and DHA in fish oil.
- Regurgitation:** action of bringing slightly digested or undigested food up again to the mouth.
- Taurine:** an essential amino acid for cats, which acts as an antioxidant and improves heart muscle function.

# The History of the Siamese

This very old breed was mentioned in a manuscript dating from 1350. It comes from Ayuthia, the ancient capital of Siam, now modern-day Thailand. This document, entitled *Poems of the Cat*, contains illustrations by court painters, showing a cat's colorpoint coat exactly like that of the Siamese.

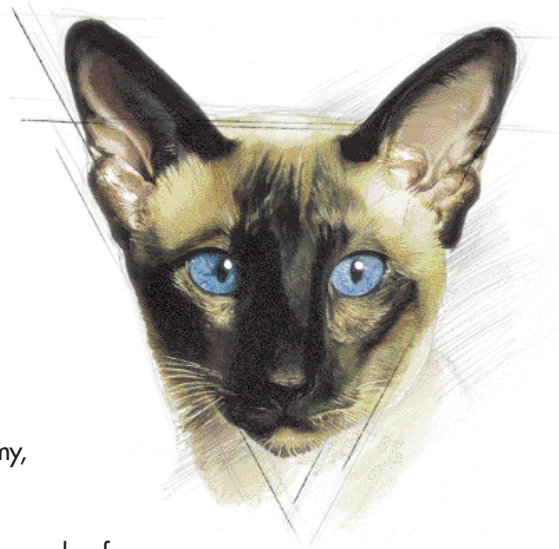
In Siam, the animal was the exclusive reserve of the royal family and was jealously confined to the palace grounds.

Two Siamese of unknown origin were shown at London's Crystal Palace in 1871. The audience was disconcerted by their physiognomy, which was somewhat unusual at the time.

In 1884 the British Consul in Bangkok Sir Owen Gould brought a couple of Siamese cats back to England. Pho and Mia went on to spawn the first crowned champions not so long after.

Siamese cats were first introduced into the USA in 1890. In Paris, in 1893, the professor of the city's natural history museum Mr Oustalet composed an article on *The Cats of Siam*, about the cats brought back by President Carnot's daughter-in-law.

But it was in the United Kingdom that the breed's first society, *The Siamese Cat Club*, was established in 1901. The 'royal' Siamese then began an extraordinary international career, which has been strengthened through the ages. Today, it is one of the most popular breeds in the world.



# The characteristics of the breed

## General appearance

A medium-sized cat that's slender, oriental, svelte, elegant and lithe.

## Head

Medium-sized, describing a triangle formed by the straight lines that run from the nose to the tip of the ears. The triangle is equilateral in the British type Siamese, isosceles in the American type. Some American breeders have added a third type as a response to contemporary tastes, with a very round face (Apple Face). Slightly convex skull, slender muzzle with a long straight nose, without a break.

## Ears

Large, wide at the bottom, well spaced, pointed, an extension of the sides of the triangle.

## Eyes

Medium-sized, in the shape of an almond. Color: the most intense blue.

## Neck

Long, thin, gracious, slightly arched.

## Body

Long, svelte, tubular. Shoulders and hips of the same width. Fine bone structure. Firm muscles.

## Legs

Long, slender. Fine bone structure and muscle tone. Small, oval feet.

## Tail

Long, lean, narrow at the base, tapering to a point.

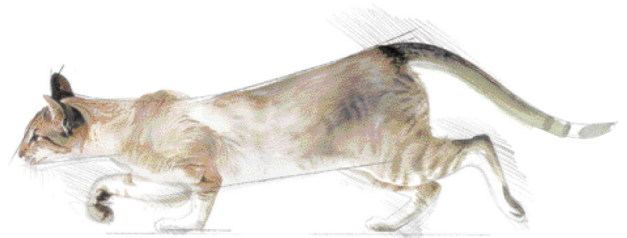
## Coat

Short hair, fine, dense, silky, shiny, flat against the body. Almost no undercoat.

Color: the coat is pigmented at the extremities of the body: face, ears, limbs and tail. The color of these areas should also be as uniform as possible. There should be a very clear contrast between the color of the points and the color of the body. All Siamese are colorpoints.

## Comments

Crossbreeding is allowed with the Balinese, Oriental Shorthair, Oriental Longhair and Burmese to obtain the Tonkinese. A Thai Siamese is obtained by crossing a Siamese with a British Shorthair and self-colored European shorthairs. The Oriental possesses the same standard save the color of the coat, which should be self-colored on the whole body.



# Bibliography

## Behavior

- VENET C. – Observations et enregistrement du comportement alimentaire chez le chat Maine Coon, Siamois, Persan et gouttière. Royal Canin Research Center, France 2002. Not published.

## Epidemiology

- PURDUE VETERINARY MEDICAL DATABASE REPORT (1981-2001) VMDB Publishing Award 1248 Lynn Hall, Purdue University, West Lafayette, IN 47 907, 1999.
- DESPREZ G. – Enquête d'élevages de chats Maine Coon, Siamois et Persan. Royal Canin Research and Development Center, 2001. Not published.

## Dermatology

- CAMPBELL KL – Fatty acids supplements in dermatology. 13<sup>th</sup> Veterinary Medical Forum (American College of Veterinary Internal Medicine), Lake Buena Vista, Florida 1995.
- RIO M. DEL, FERNANDEZ-MARTINEZ J et al – Wild and cultivated *Borago officinalis* L: sources of gamma linolenic-acid. *Grasos y Aceites*, 1993, 44 (2): 125-126.
- FAN YY, CHAPKIN RS – Importance of dietary gamma-linolenic acid in human health and nutrition. *Recent Advances in Nutritional Science*, 1998: 1411-1414.
- REINHART GA, DAVENPORT GM – Omega 3 fatty acids and inflammation management North American Veterinary Conference, Orlando, Florida 1995.

## Cellular aging

- BELURY MA. – Inhibition of carcinogenesis by Conjugated Linoleic Acid: Potential Mechanism of Action. Department of Molecular Medicine, Northwest Hospital, Bothell, 2002. *J Nutr* 2002 Oct; 132: 2995 – 8, 2002.

## Digestive health

- HARMON D. – Incidence of dietary inclusion of Mannanligosaccharide on diet component digestibility and intestinal bacteria. University of Kentucky, Lexington, USA, 1999.
- O'CARRRA R. – Effects of dietary inclusion of a mannanligosaccharide preparation on the immune system of rats and dogs. Cell and Molecular Biology Group, Department of Biochemistry, University College Galway, Ireland, 1997.

## Immunology

- REINHART, G. A. Modulation of humoral and cell-mediated immune responses by dietary lutein in cats. *Vet Immunol Immunopathol* 73 (2000), 331-41.
- SUJAK, A., GABRIELSKA, J., GRUDZINSKI, W., BORC, R., MAZUREK, P. AND GRUSZECKI, W. I. – Lutein and Zeaxanthin as Protectors of Lipid Membranes against Oxidative Damage: The Structural Aspects. *Arch Biochem Biophys* 371 (1999), 301-7.

# Siamese 38™

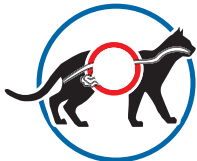
**Tailor-made nutritional solutions to meet  
the needs of Siamese cats**

ADULT PURE BREED CAT ▶

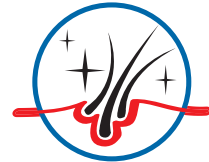
from 1 year to 10 years



Siamese cats are known for their lean, muscular bodies. To help maintain their silhouette, SIAMESE 38™ is formulated with 38% lean protein and fat-burning L-carnitine.



Siamese cats have sensitive digestive systems, which can lead to vomiting. SIAMESE 38™ contains specialized nutrients that stimulate beneficial bacteria and block harmful bacteria in the digestive tract.



Siamese cats are recognized for their striking markings in Blue, Lilac, Cream or Seal point. SIAMESE 38™ includes Omega 6 fatty acids and L-tyrosine to enhance the color contrast and beauty of the coat.



**Siamese 38™**

GROWTH ▶



**BABYCAT 34™**  
For Young Kittens  
from 1 to 4 months



**KITTEN 34™**  
For Older Kittens  
from 4 to 12 months

▶

over 10 years



**MATURE 27™**  
Mature cats  
exclusively indoors



**ACTIVE MATURE 28™**  
Mature cats  
with outdoor access

# Royal Canin, setting the pace in Feline Health Nutrition

## 1997

World premier: a new generation of nutritional products for cats (RCFI range) tailored to the age and physiology of the cat (Kitten, Fit, Special, Slim, Senior). This new generation resolutely turned its back on the traditional anthropomorphical approach based on ingredients.

## 1999

Persian 30: the first food specially adapted to the physiognomy and the specific needs of Persian cats:

- Perfection of the Almond 11 kibble
- Dermasystem (beauty of the skin and the coat)
- Hairball Transit System (facilitating the elimination of ingested hairballs).

## 2001

Global launch of Indoor 27®, the first food for indoor cats (hairballs, obesity, smell).

## 2002

Launch of 4 major world firsts with the new Feline Nutrition range:

- Strengthening natural defenses (Immunity Complex)
- Combating cellular aging (Anti aging complex)
- Regenerating coat and skin
- Made-to-measure kibble texture.

Launch of Babycat 34, food nutrition for kittens (1-4 months).

## 2003

Three major world firsts

- Launch of Persian 30 (especially benefiting from the latest advancements made by Royal Canin in the protection of the body's natural defenses)
- Launch of Maine Coon 31, the first ever tailor-made food to meet the nutritional needs of Maine Coon cats
- Launch of Siamese 38, the first ever tailor-made food to meet the nutritional needs of Siamese cats.

## 2004

Launch of a special cat food for oral and digestive problems, Oral Sensitive 30.

## 2005

Launch of Feline Health Nutrition range of 15 formulas optimized specifically to individual cats needs (Growth, Indoor, In & Outdoor, Special and Breed).

## 2006

Launch of Feline Selective 35/30, the first feline diet that combines 2 different formulations for increased palatability.

***For more information or advice, please contact our  
Consumer Assistance professionals at:***

Royal Canin USA  
500 Fountain Lakes Blvd., Suite 100  
St. Charles, MO 63301  
1-800-592-6687 • [www.royalcanin.us](http://www.royalcanin.us)



  
**ROYAL CANIN**  
FELINE BREED NUTRITION™